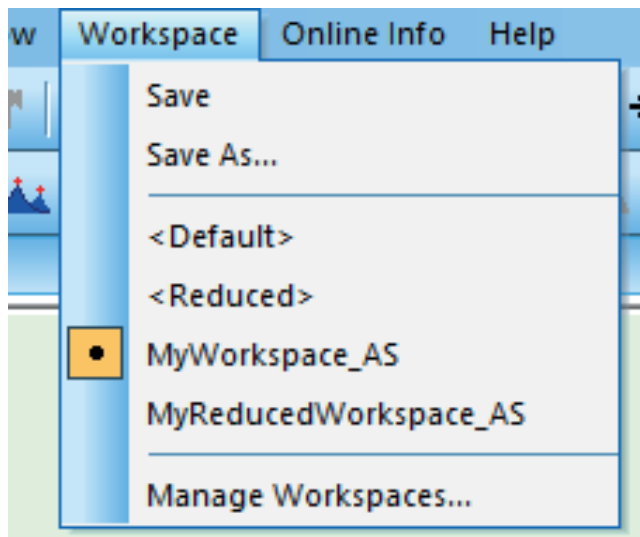


Workspaces in Proteus® Analysis Software

Dr. Alexander Schindler

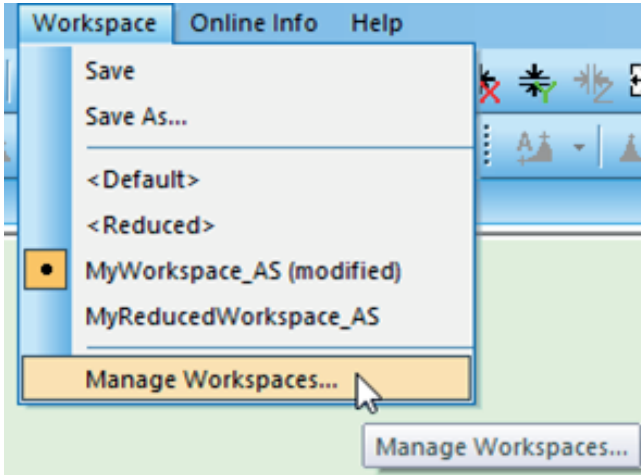
Proteus® analysis can be individualized in many ways like, e.g., Settings/Attributes/Formatting, Settings/Options, View/Background, evaluation settings, status of displayed or hidden menu items, etc. A *Workspace* stores all such settings, it can be considered as an individual working profile of *Proteus*® analysis. Users can create and switch to their own *Workspaces* or to factory *Workspaces* (see below). *Workspaces* are available as of *Proteus*® version 9.0 and higher.

From the *Workspace* menu (see figure 1), one can save the current *Workspace* or save it as a new *Workspace*. It is furthermore possible to switch to a different *Workspace* just by clicking on its name ("MyWorkspace_AS" in this example). The *Workspace* <Default> reflects the factory setting showing all menus and items that are possible, while the *Workspace* <Reduced> is also a factory *Workspace* where only the most important menu items are shown.



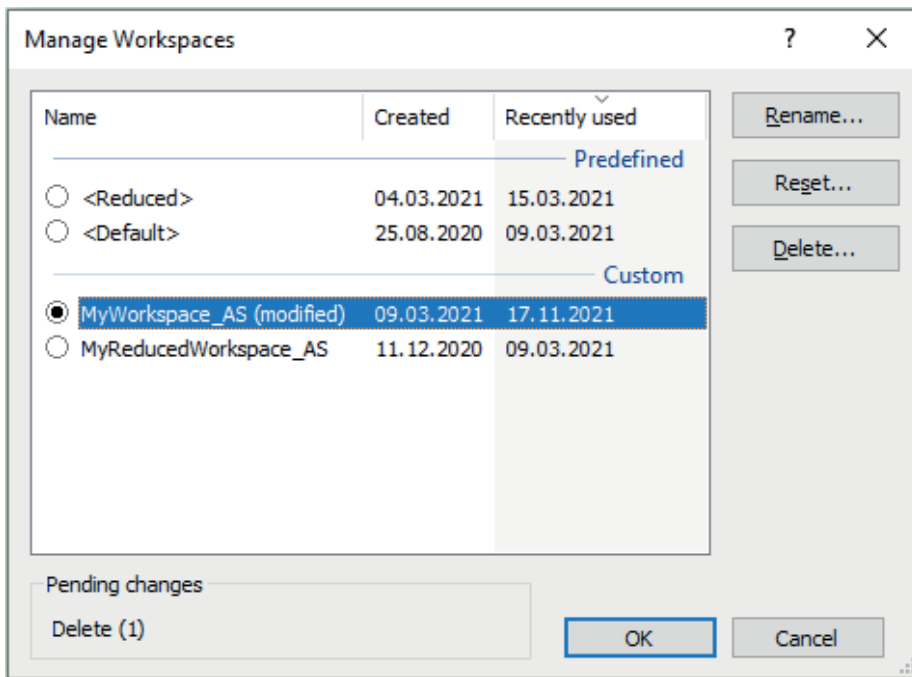
1 Workspace menu in *Proteus*® analysis.

The *Manage Workspaces* menu item (see figure 2)



2 *Manage Workspaces* in Proteus® analysis.

leads to the dialogue shown in figure 3.



3 *Manage Workspaces* dialog in Proteus® analysis.

It is possible to switch to a *Workspace* via the radio buttons. One can *Rename* or *Delete* custom *Workspaces* or *Reset* any *Workspace* to the factory settings for <Reduced> or <Default>. Further explanations are available in the help system.

In summary, *Workspaces* allow for storing of individual working profiles of Proteus® analysis. Switching between users' and factory *Workspaces* can be done easily.